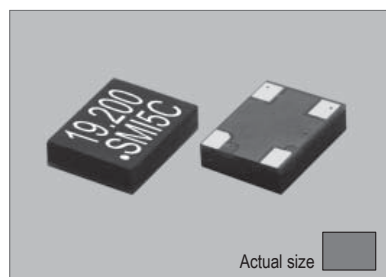
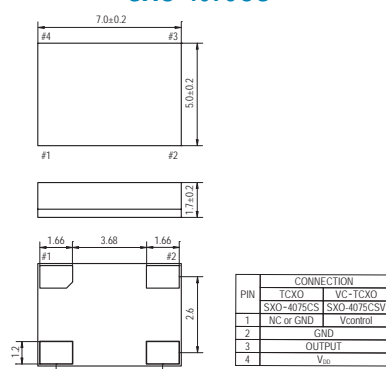


SXO-4075CS

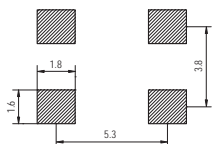


Actual size
0.13 gm (wt.)

SXO-4075CS



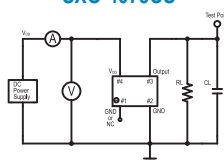
SOLDERING PATTERN



OUTPUT WAVEFORM

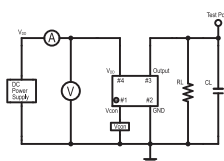


TEST CIRCUIT SXO-4075CS



Both DC-Cut capacitor and by-pass capacitor are built in the oscillator.
RL: 10Kohm ± 10%
CL: 10pF ± 10% including fixture and probe capacitance

SXO-4075CSV



Both DC-Cut capacitor and by-pass capacitor are built in the oscillator.
RL: 10Kohm ± 10%
CL: 10pF ± 10% including fixture and probe capacitance

STANDARD SPECIFICATIONS

● CLIPPED SINE WAVEFORM
● PACKAGE SIZE 7.0x5.0 mm

Item		Specifications	
General part number		SXO-4075CS*1	SXO-4075CSV*1
Frequency range		10.000 MHz to 40.000 MHz	
Initial frequency tolerance at +25°C ± 2°C		±1.5 ppm max.*2	±1.5 ppm max.*2*3
TCXO or VC-TCXO		TCXO	VC-TCXO
Frequency Stability	Temperature range	DD/kjj : ±2 ppm max. over -30°C to +75°C (referred to +25°C) ³ CC/kll : ±1.5 ppm max. over -30°C to +85°C (referred to +25°C) ³ BB/klj : ±1 ppm max. over -30°C to +85°C (referred to +25°C) ³ AA/klj : ±0.5 ppm max. over -30°C to +85°C (referred to +25°C) ³	
	Input voltage change	±0.2 ppm max. at VDD ±5% DC	
	Output load change	±0.2 ppm max. at 10 kΩ ±10% with 10 pF ±10%	
	Aging	±1 ppm max. per year at +25°C ±3°C	
Operating Conditions	Operating temperature	-30°C to +75°C (S1 = Standard 1) -30°C to +85°C (S2 = Standard 2) -40°C to +85°C (S = Option, frequency dependent)	
	Supply voltage (VDD)	D = +1.8V, F = +2.5V, H = +2.8V, J = +3.0V, K = +3.3V DC ±5%	
	Control voltage (Pin#1)	n.a.	0.9V ± 0.8V (VDD = +1.8V) 1/2 VDD ±1V (VDD = +2.5V to +3.3V)
Absolute Max. Ratings	Supply voltage	-0.6V to +4.6V DC	
	Vcontrol voltage (Vcon)	n.a.	-0.6V to VDD +0.6V DC
	Storage temperature	-40°C to +85°C	
Input current		1.5 mA max. (10.000 MHz to 30.000 MHz) 1.7 mA max. (30.000 MHz to 40.000 MHz)	
Output (-40°C to +85°C)	Level	0.8 Vp-p min.	
	Load	10 kΩ // 10 pF	
	Waveform	Clipped sine wave (DC-cut)	
Frequency Adjustment	Voltage control	n.a.	±8 ppm to ±13 ppm (VDD = +1.8V) ±9 ppm to ±15 ppm (VDD = +2.5V to +3.3V)
		n.a.	Positive
Frequency slope		n.a.	Positive
Harmonic distortion		-5 dBc max.	
Start-up time		10 ms max.	
SSB phase noise (26.000 MHz)		-133 dBc / Hz, Typical at 1 kHz offset	
Short-term frequency stability		±1 ppb max. (Allan variance Tau = 0.1 sec.)	
IR reflow resistance		±1 ppm max. (referred to frequency before reflow)	
Reflow condition		+240°C ±10°C for 10 seconds +170°C ±10°C for 1 to 2 minutes (preheating)	
Standard frequencies (MHz)		10.000, 13.000, 16.367667, 16.369, 16.800, 19.200, 20.000, 23.104 24.5536, 25.000, 26.000, 38.400	
Optional Operating Temperature*4	Low limit / Symbol	-10°C / g	-15°C / h
	High limit / Symbol	+55°C / ff	+60°C / gg

(*1) Final part number to be assigned with package type, TCXO or VC-TCXO, frequency stability, input voltage, operating temperature and frequency.
e.g. SXO-4075CSV-CC/klj-K-S2-19.2MHz
(*2) Referred to nominal frequency before reflow soldering.
(*3) At Vcon = 1/2 VDD DC for SXO-4075CSV.
(*4) Select "low limit" and "high limit" for new operating temperature combination from the lists.

PACKAGE DATA

Item	Package	SXO-4075CS
Cover		Epoxy Resin
Base		Glass Epoxy
Sealing		Seam (Built-in crystal)
Terminal		Copper (metalized)
Terminal plating		Gold / Nickel (surface) / (under)
RoHS		Compliant (Pb-free)

TAPE SPECIFICATIONS

